

- KEY**
- 2-Bed 3-Person apartment
 - 1-Bed 2-Person apartment
 - Communal spaces
 - Integrated care board facilities
 - Front gardens / green spaces
 - Vehicular access
 - Frontage
 - Pedestrian access

Total 60 units
 24 x 2B3P
 36 x 1B2P

Communal space: 501m²

Extra care brief requires approximately 450 m² of communal spaces for this size of development

The current layout provides an initial capacity study, it has been created without any studies relating to below ground services, archaeological, ecological or other site constraints or dialogue with the planning authority departments and other statutory stakeholders. The drawings have been created from OS map information and are not based on measured survey data.

Date	No.	Revision Notes
DRAFT		

Design Firm



Project Title
 Lowbourn, Melksham
 Wiltshire Council

Sheet Title
 Option 2

Sheet Scale
 1:500 @ A3

Drawn By
 CW

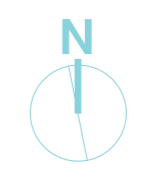
Total Sheets
 3

Reviewed By
 JE

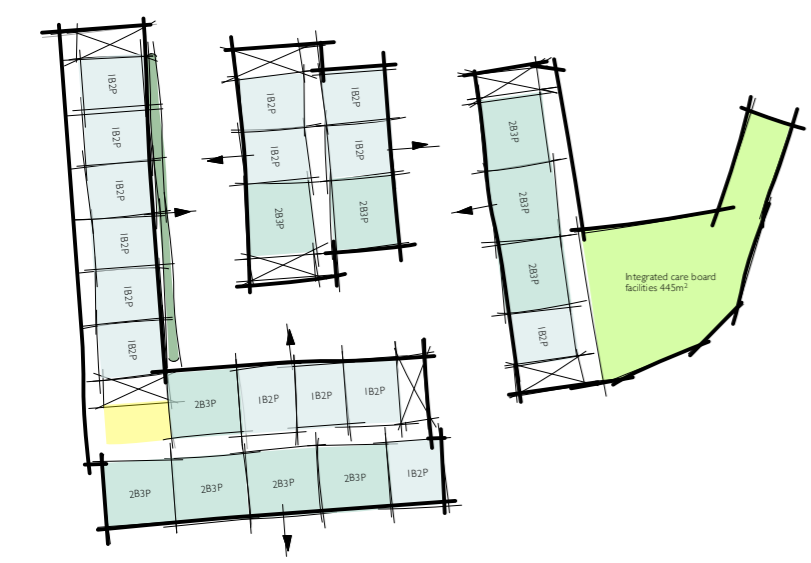
File Name
 2310 Site.vwx

Sheet No.
 Project ID - Number
2310 SK002

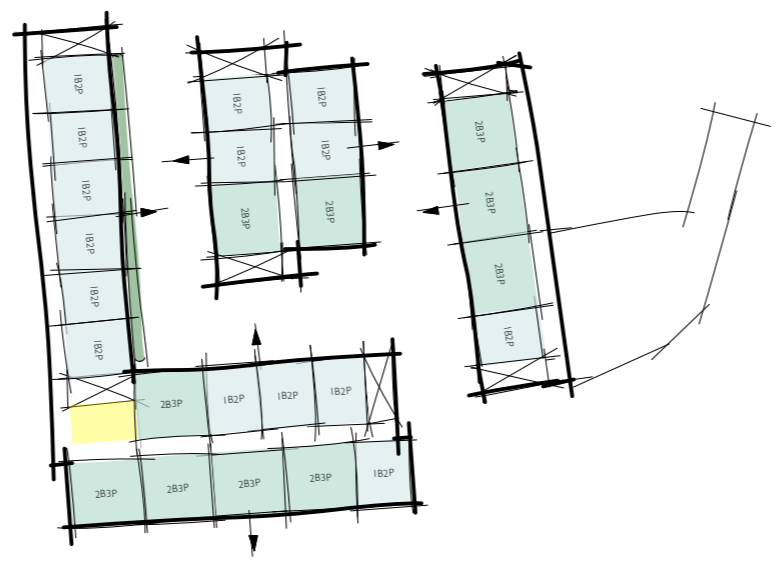
Suitability
 Code - Description
SO INITIAL STATUS



Ground Floor @ 1:500



1st Floor @ 1:1000



2nd Floor @ 1:1000